

## Lucas



4 BEDROOMS  
2 FULL BATHS

1,850 LIVING SQ. FT.  
2,039 TOTAL SQ. FT.



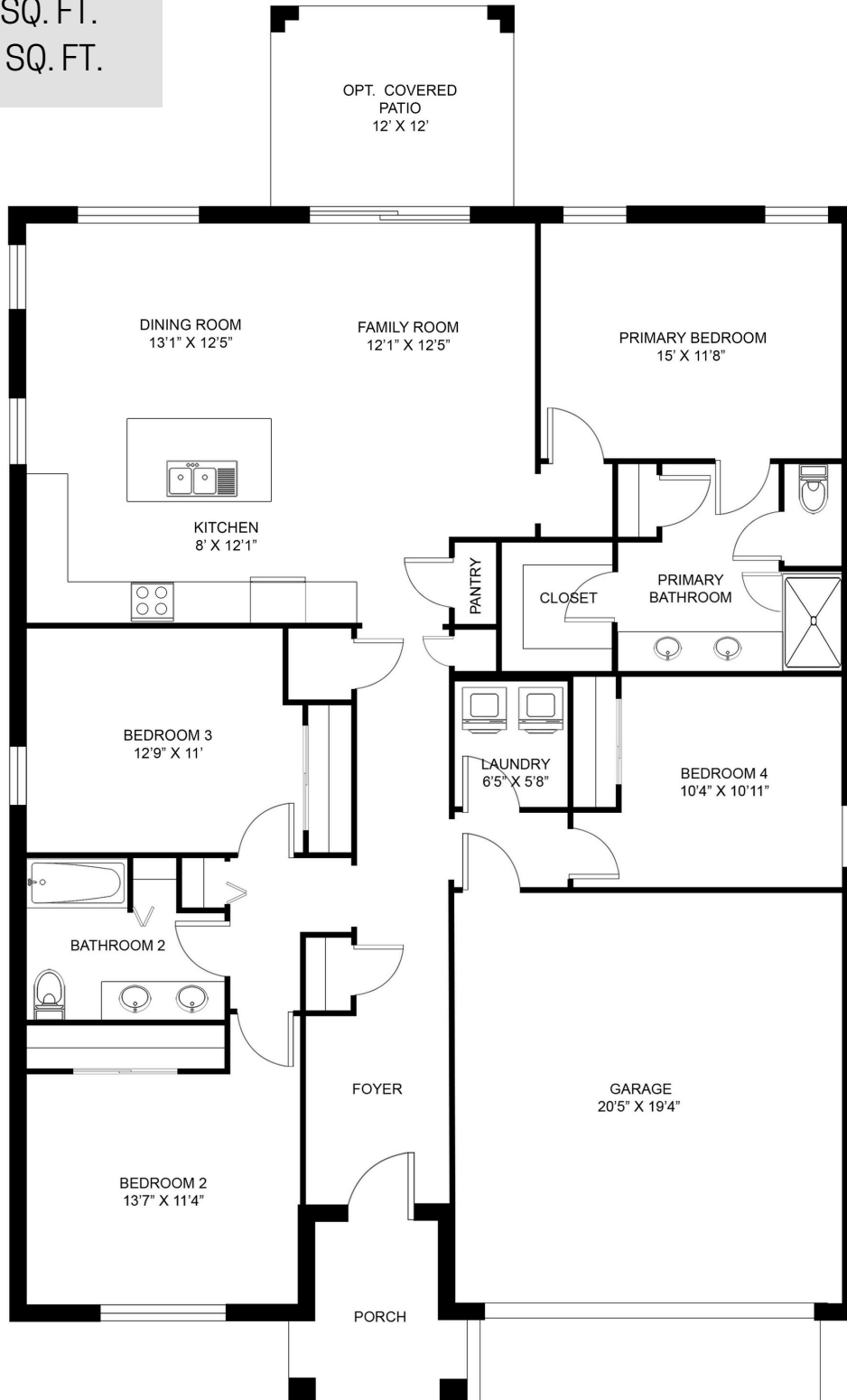
# The Lucas

# GRANDISLE

 SUMMERPARKHOMES

4 BEDROOMS  
2 FULL BATHS

1,850 LIVING SQ. FT.  
2,039 TOTAL SQ. FT.



**Broker Cooperation Welcome.** Summerpark Homes reserves the right to change or withdraw any offer at any time. Prices, promotions, features, amenities, and availability are subject to change without notice. Summerpark Homes may change design, materials, features, amenities and method of construction at any time without prior notice. Plans/illustrations/Photographs may contain options and features that are not standard and may not be available on all models, model types or homes.